



**Tiertime**

Beijing Tiertime Technology Co., Ltd

[youtube.com/c/UP3DPrinters](https://www.youtube.com/c/UP3DPrinters)

[facebook.com/up3dp/](https://www.facebook.com/up3dp/)

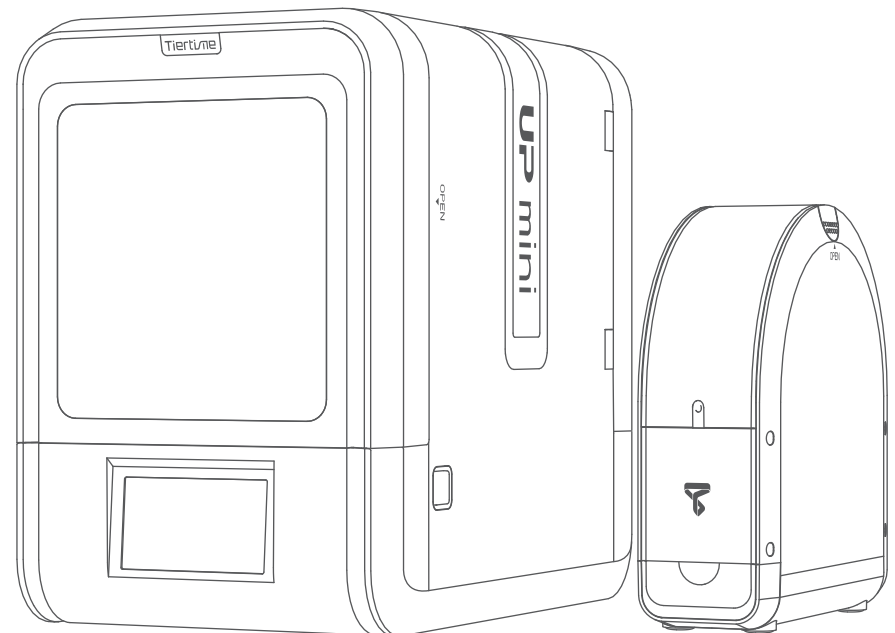
[instagram.com/up3dprinter/](https://www.instagram.com/up3dprinter/)

[twitter.com/UP3DP](https://twitter.com/UP3DP)

Support: [support@pp3dp.com](mailto:support@pp3dp.com) Web: [www.tiertime.com](http://www.tiertime.com) [www.up3d.com](http://www.up3d.com)

# UP mini 2 Quick Start Guide

V 0.1



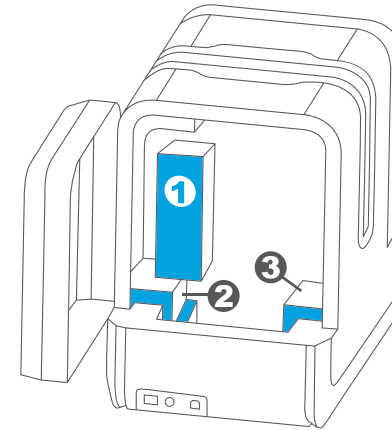
Download full user manual at [www.up3d.com](http://www.up3d.com) -Support section

# Index

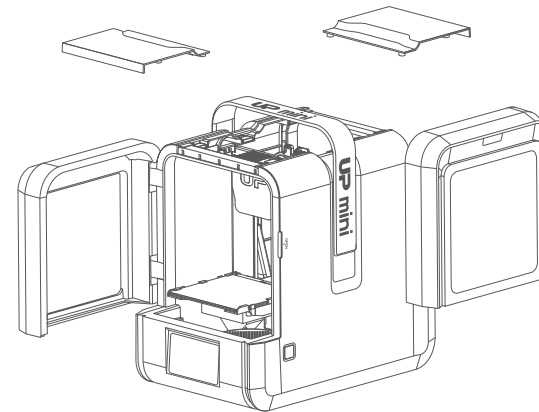
Unpacking .....	1
Install Printer and UP Fila Station (spool holder) .....	2
Install Software .....	3
Load Filament .....	4/5
Setup Wi-Fi .....	6
Load and Print Model .....	7
Product Activation .....	8

## Unpacking

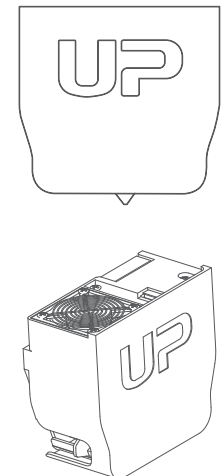
1\ After unboxing the machine, remove the cushions inside the printer.



2\ Open the front door and remove the top lids.

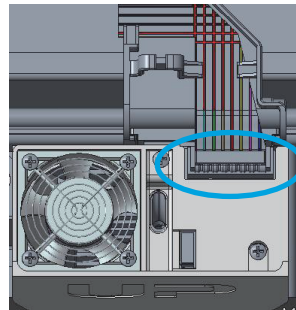
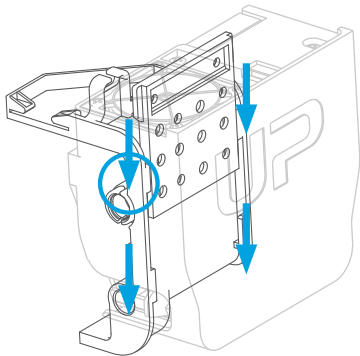
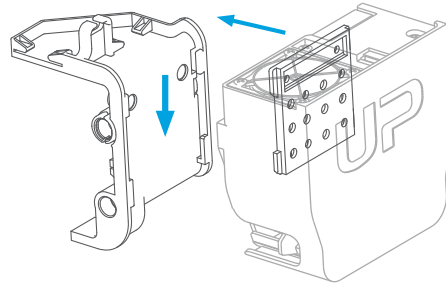


3\ Find the print head in the accessory box.

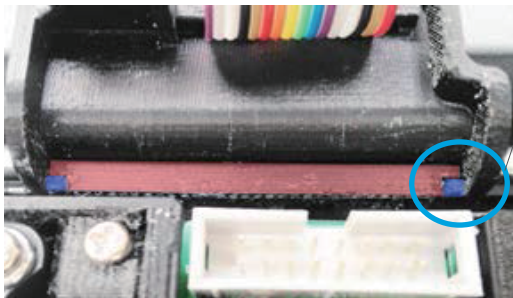


## Install Printer and UP Fila Station (spool holder)

4.1\ Aglin the print head to slots of print head mount.



4.2\ Slide the mounting plate into the slots and plug the rainbow cable.

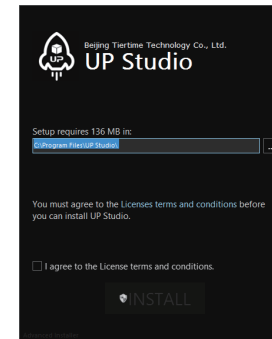


4.3\ The print head must be pushed to the bottom of the mount.

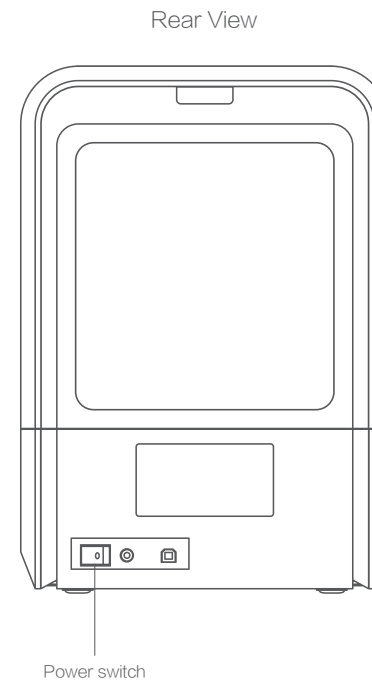
**Notice:** when installed correctly, red and blue shaded parts should be at the same level.

## Install Software and Connect to Printer

1\ Please go to [www.up3d.com](http://www.up3d.com) to download the dedicated UP Studio software and install it on your computer.

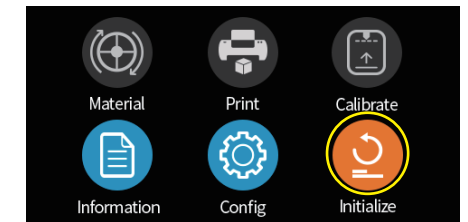


2\ Connect the print to computer.

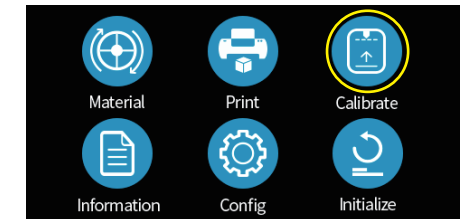


Power switch

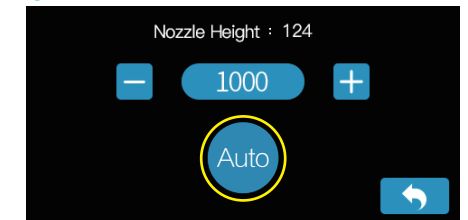
3\ Automatic nozzle height detection.



① Click "Initialize" button to initialize the printer.



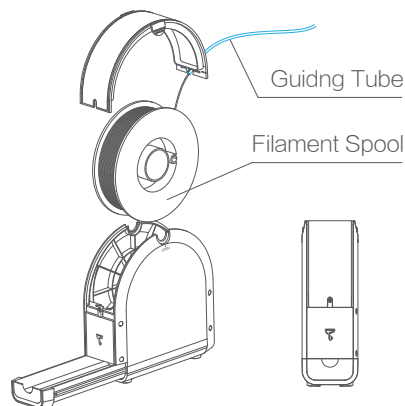
② Click "Calibrate" button.



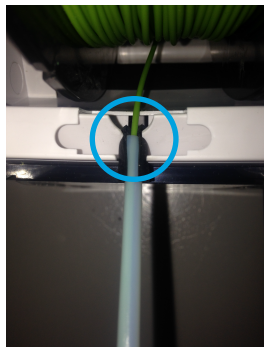
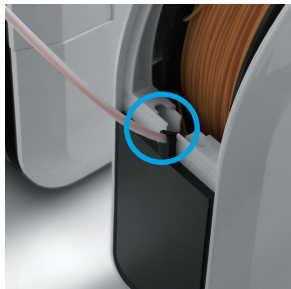
③ Click "Auto" start to detect nozzle.

## Load Filament

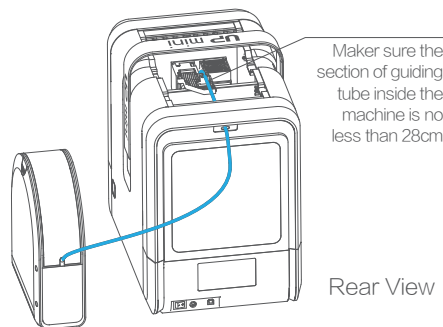
- 1\ Put filament spool into the UP Fila Station insert filament into guiding tube.



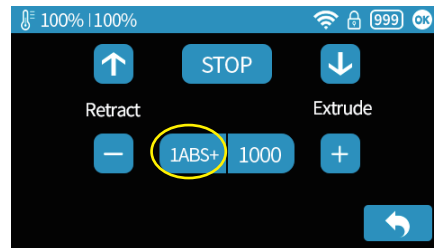
- 3\ Put the guiding tube into the rubber ring



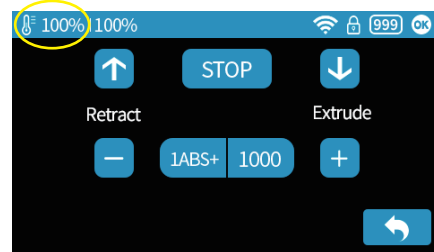
- 2\ Insert filament and guiding tube into the machine through the hole on the back door.



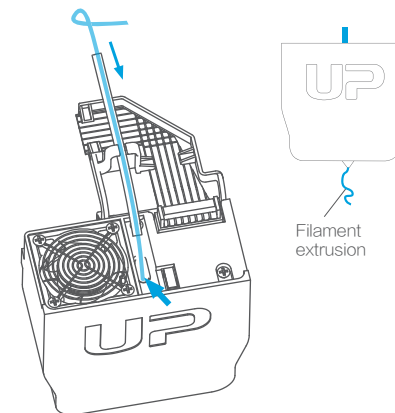
- 4\ In the material page, press the circular material button to switch between different materials.



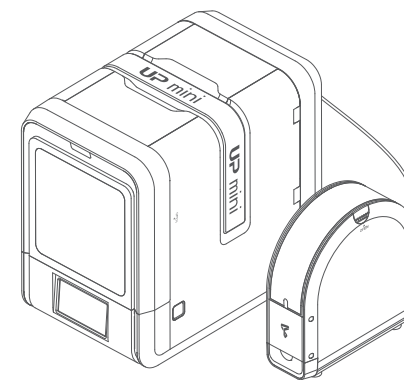
- 5\ After selecting the right material, click "Extrude" the print head temperature will be displayed on the status bar on top.



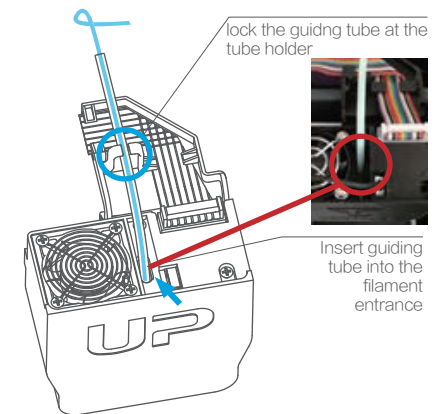
- 6\ Gently Push the filament into the filament entrance and down to the end. After the reaching the print temperature, the printer will buzz and start extruding filament.



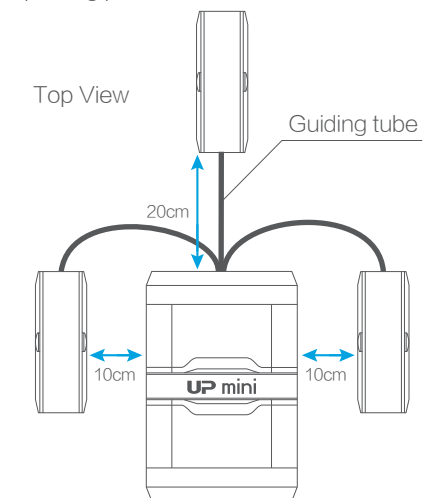
- 8\ Close the top covers and doors.



- 7\ Push the guiding tube into the filament entrance and insert the tube in the holding clip on the mount.



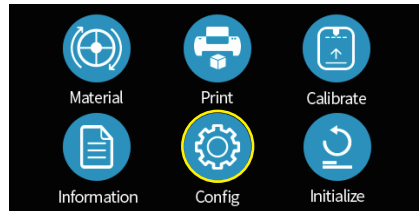
- 9\ Please note that the UP Fila station can only be placed at following positions, other location could adversely affect printing performance.



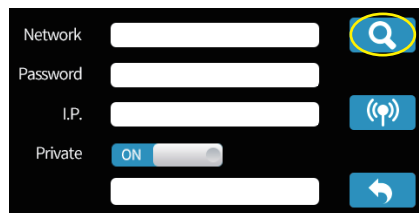


## Setup Wi-Fi

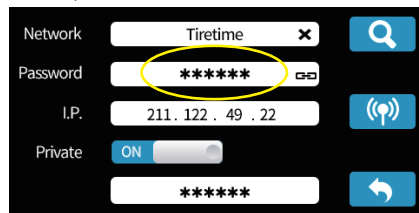
1\ Click "Config" button.



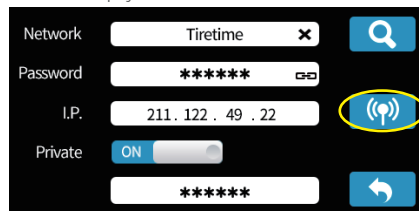
3\ Click on the top right corner of the search key, search WIFI.



5\ Click the Password field to input Wi-Fi password.



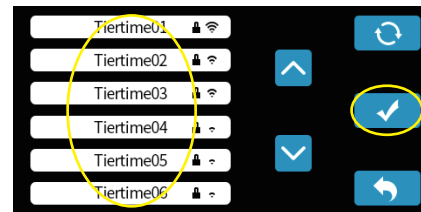
7\ Click "connect" button. If connected successfully, the Wi-Fi symbol will change from "empty" to "filled".



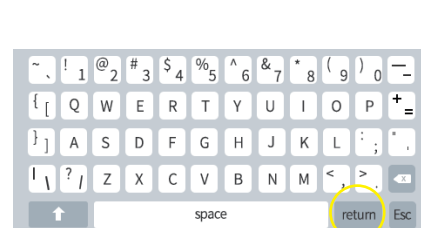
2\ Make sure Wi-Fi eld option is "ON" then click the Wi-Fi eld button the upper right corner.



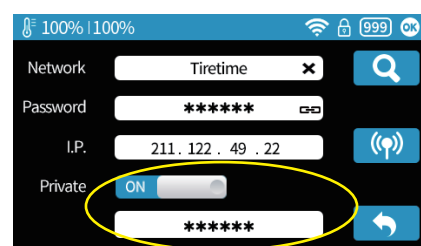
4\ Choose the Wi-Fi network in list, need to be the same as your computer's network.



6\ Input the password, then press "return".

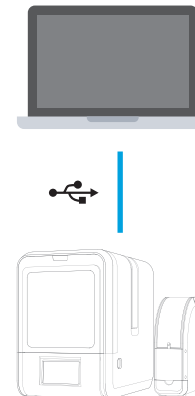


8\ User could use the "Private" option to set a password for the machine to prevent unauthorized Wi-Fi access.

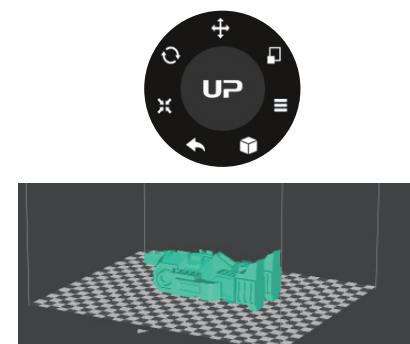


## Load and Print a 3D Models

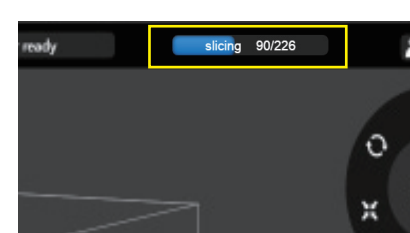
1\ Connect the printer to the computer via USB.



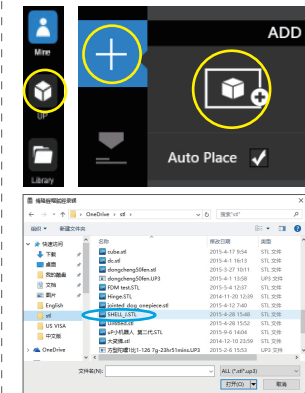
3\ Use the adjustment wheel to setup.



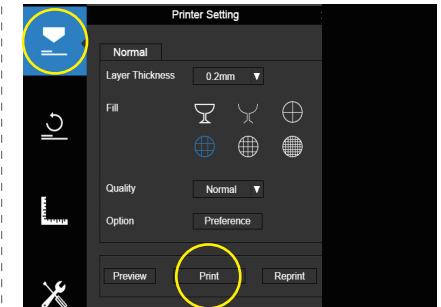
5\ Slicing and data transmission progress will be shown on the status bar.



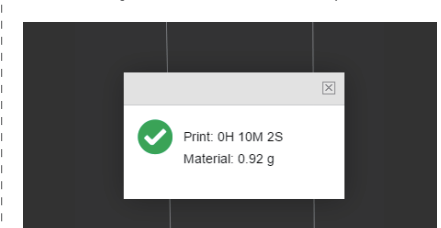
2\ Click UP button at the main menu to enter print setup interface, click "+" button to load a file (image file or STL/UP3 file).



4\ Click "Print".



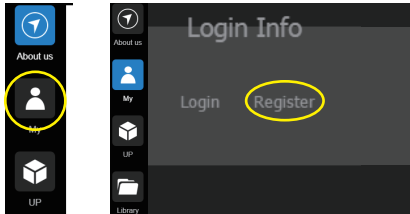
6\ When finished transmission, the amount of time and material need for the print job will be shown, after this point user can safely disconnect from the printer.



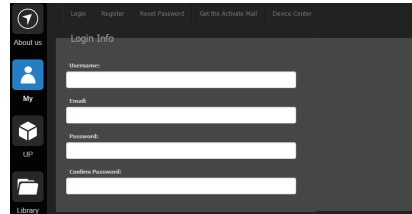
# Product Activation

In order to permanently use your UP mini 2 printer, user need to register an UP3D account and activate the product through the software, otherwise the printer can only print 30 times before locking itself.

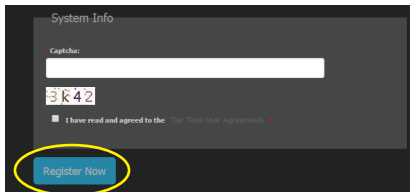
1\ Click “My Account” – Register.



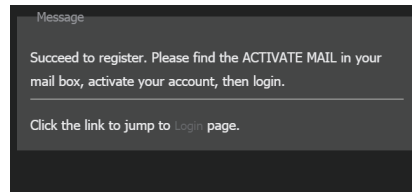
2\ Fill in the form. If already registered skip to step 5.



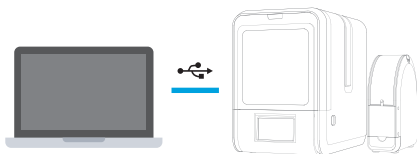
3\ When finished the form, agree the terms and click “Register Now” .



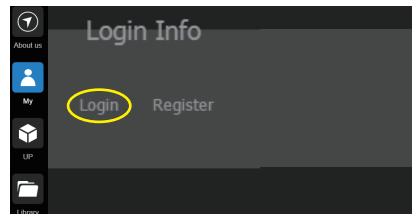
4\ An email will be sent to the registered email address. Click the activation link in the mail.



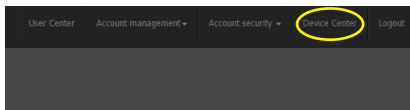
5\ Connect printer to computer.



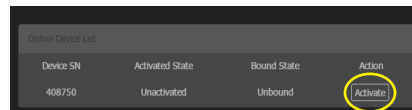
6\ Go to My Account and Log in.



7\ Click “Device Center” button.



8\ The connected printer will appear in the list and click “Activate” to activate your printer.



Scan QR code to watch quick start guide video