



SHINING 3D



EINSTAR 2

Still EINSTAR, Even Better

The Upgrade You've Been Waiting For

Smarter, lighter, finer — EINSTAR 2 takes everything you loved about the original and levels it up. Say goodbye to tangled cables, messy prep work, and limited mobility. With a hybrid light source, true wireless design, and vivid full-color capture, EINSTAR 2 delivers studio-quality 3D scans with zero fuss.

From screw-sized objects to entire van interiors, from indoor setups to outdoor explorations, EINSTAR 2 handles all for creators, hobbyists, and curious minds alike. Serious results. No serious experience required.



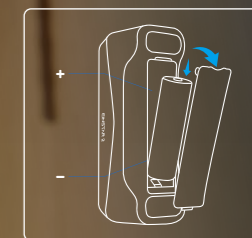
Scan Data

True Wireless, Truly Tireless Palm-Sized Body

True Wireless, Truly Tireless

(cable connection also available if Wi-Fi interference occurs)

- Swappable built-in battery delivers up to 3 hours scanning without breaks.
- No more cable restrictions, no extra hub needed, scan wherever inspiration strikes.



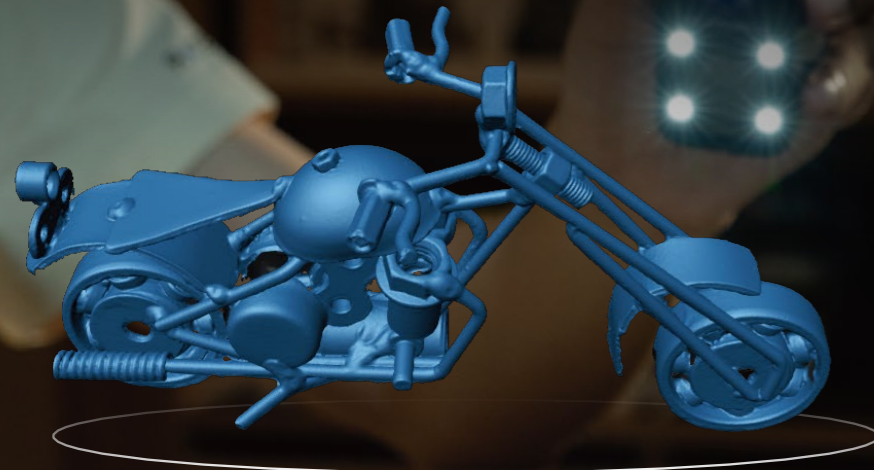
Palm-Sized Body

Compact, lightweight, and engineered for comfort. With a redesigned structure and reduced weight (only 420 g), it's your ideal scanning companion on-the-go.

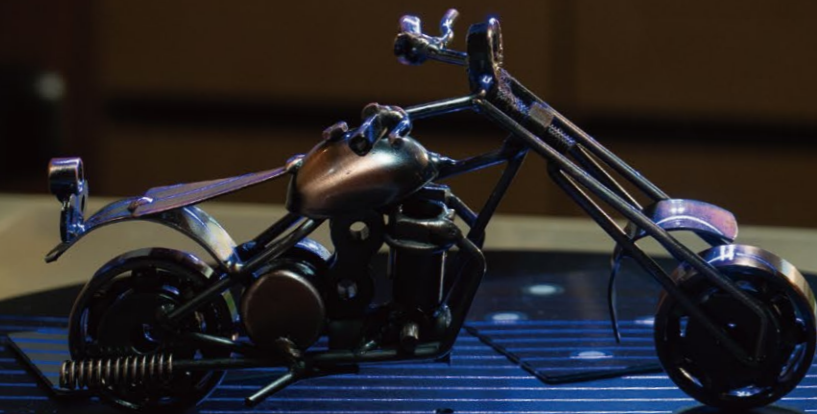
Hybrid Light Source

17 Parallel Laser Lines

- Your go-to solution for high-resolution scanning of fine details in small objects.
- The dense array of 17 parallel lines enhances efficiency for medium-sized scans, cutting time and effort.
- Improving performance on reflective and metallic surfaces.
- High-speed scanning of up to 90 fps.

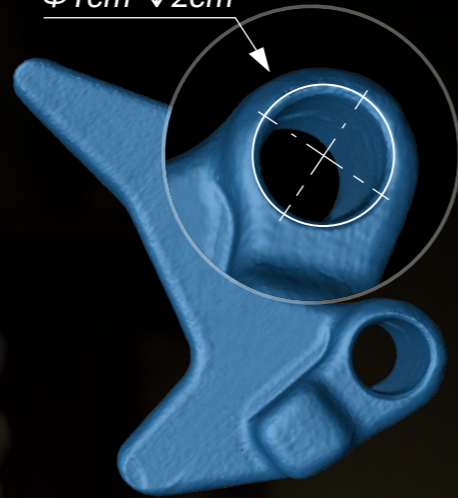


Scan Data



90 fps

$\Phi 1\text{cm}$ $\nabla 2\text{cm}$



Optimized capability for deep-hole scanning

IR VCSEL

- Higher-resolution cameras for cleaner point cloud data.
- Efficient large-object capture with abundant data in a single scan.
- Stronger performance with black surfaces and outdoor environments.
- Fast scanning of up to 20 fps.



Scan Data





No Spray, No Delay

EINSTAR 2 adapts to a wide range of materials, it can scan black or reflective objects directly, no spray required. Save time, stay clean, and get accurate results instantly.

Take It Outside

With robust performance in dynamic lighting and complex environments, EINSTAR 2 lets you take reliable 3D capture beyond the studio walls. Take it outside, your data stays sharp. Laser HD mode works up to 110,000 Lux and IR Rapid mode up to 70,000 Lux for reliable scanning even in bright light environment.





Lifelike Portrait Scanning

- Infrared light ensures eye-safe and pleasant experience.
- Capture full body data in just 60s.



Realism You Can See

Integrated RGB camera captures vivid, true-to-life color for every scan. It's suitable for scanning art and crafting immersive VR/AR experiences.



EXStar Hub: Next-Gen Software

EXStar Hub is an intuitive software platform for the entire EINSTAR scanner lineup. It streamlines workflows through a unified interface, reduces system load, and improves performance, allowing faster scanning, greater mobility, and lower operating costs.

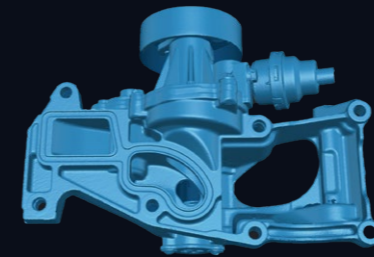
With enhanced visuals and simplified controls, EXStar Hub also provides powerful tools for model processing and optimization, including:

- Data quality indicator
- Hybrid alignment (Marker/Feature/Texture)
- Global Markers
- Auto detecting plane
- Scan rewind
- Cutting plane tool
- Auto hole filling
- 1-2-3 alignment
- Model measurement
- Texture adjustment
- Model simplification



Applications

• Aftermarket & Reverse Engineering



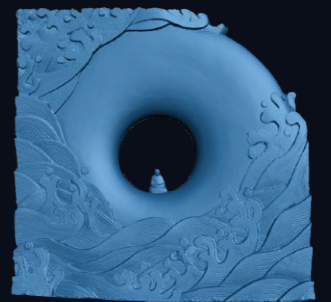
• AR/VR Digital Content



• 3D Printing & Personal Manufacturing



• Heritage Preservation & Art



SPECIFICATIONS

EINSTAR 2

Scan Mode	Laser HD	IR Rapid
Light Source	17 Blue Laser Parallel Lines	IR VCSEL
Resolution	0.05 ~ 10 mm	0.2 ~ 10 mm
Scanning Speed	2,500,000 points/s	1,440,000 points/s
Working Distance	100 ~ 600 mm	160 ~ 1400 mm
Max. FOV	490 x 580 mm	1170 x 1385 mm
Alignment Mode	Global Marker/Markers	Global Marker/Markers/Features/Texture/Hybrid
Minimum Scan Volume	1*1*1 cm	5*5*5 cm
Camera Resolution	3D: 2MP*2 ; Texture: 2.3MP	
Output Formats	STL; OBJ; PLY; 3MF; ASC	
Laser Class	Class 2	Class 1
Outdoor Scanning Environment	Below 110,000 Lux	Below 70,000 Lux
Operation Conditions	-10°C~ 40°C	
Interface & Power Source	USB Type-C; Battery: 5500mA*1 Support 60W-PD3.0 Charger	
Dimension	(H*D*W): 130 x 37 x 61 mm/ 5.12 x 1.46 x 2.40 in	
Net Weight	420g / 0.92 lbs (Batteries included), 348g / 0.77 lbs (Batteries excluded)	
Certifications	CE, FCC, ROHS, WEEE, FDA, SRRC, IP50	

PC Configurations

Win11, Professional 22H2 (64-bit); Graphics card: NVIDIA GeForce RTX 3060 Laptop GPU or above;
VRAM: 6 GB or above;
RAM (Minimum): 32 GB, DDR5 dual-channel; RAM (Recommended): 64 GB or above, DDR5 dual-channel;
Interface: USB 3.0; Processor: 13th Gen Intel®Core™ i7-13700H or above